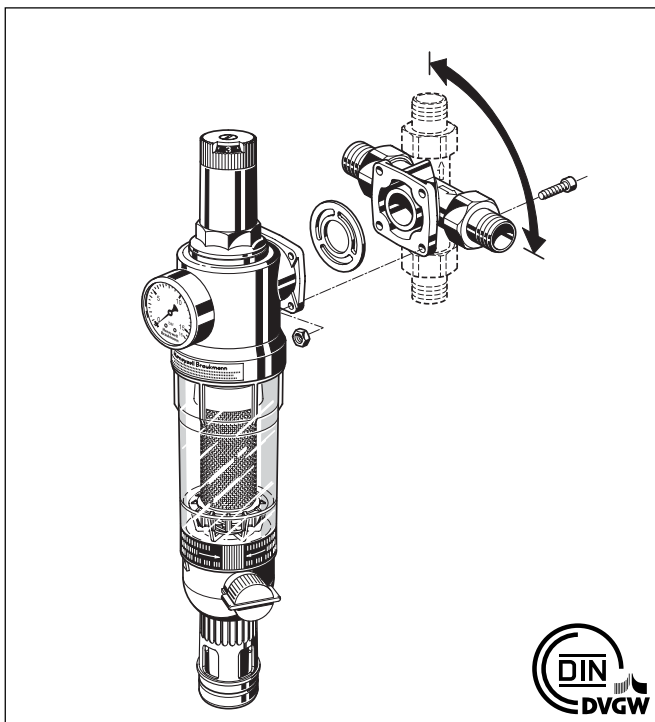


# FK76CS

## Reverse rinsing filter combination with rotatable connector flange

### Product specification sheet



#### Construction

The filter combination comprises:

- Housing with pressure gauge
- Spring bonnet with adjustment knob and setting scale
- Valve insert including diaphragm and valve seat
- Fine filter in clear filter bowl
- Rotatable connector piece
- Threaded union connections
- Ball valve and drain connection
- Double ring wrench

#### Materials

- Housing and connections of dezincification resistant brass
- High quality synthetic material spring bonnet
- High quality synthetic material valve insert
- Stainless steel fine filter
- Red-bronze or shock-resistant, clear transparent synthetic material filter bowl
- Brass rotatable connector piece
- Fibre-reinforced NBR diaphragm
- NBR seals

#### Application

The FK76CS filter combinations comprise reverse rinsing filter and pressure reducing valve in one appliance. They ensure a continuous supply of filtered water. The fine filter stops the ingress of foreign bodies, for example rust particles, strands of hemp and grains of sand. The pressure reducing valve prevents pressure damage and reduces water consumption. The integrated appliances correspond to the requirements of the current DIN/DVGW specification. Features of the individual components also apply for the combination unit.

FK76CS filter combinations are especially suited for the retrofitting and modernisation of existing water supply systems in buildings. The rotatable connector piece permits installation even where space is limited. Installation can be in either horizontal or vertical pipework.

#### Special Features

- DIN/DVGW tested
- Balanced seat valve
- Filtered water supplied even during reverse rinsing
- Patented reverse rinsing system - fast and thorough cleaning of the filter with small amount of water.
- Memory ring indicates when next manual reverse rinsing is due
- Automatic reverse rinsing actuator with bayonet connector can be retrofitted
- Filter bowl in shock resistant, clear plastics enables easy checking of amount of filter contamination
- Inlet pressure compensation - fluctuating inlet pressures do not influence outlet pressure
- Valve and filter insert fully interchangeable

#### Range of Application

Medium Water

Inlet pressure Maximum 16.0 bar with clear filter bowl

Outlet pressure 1.5 to 6.0 bar

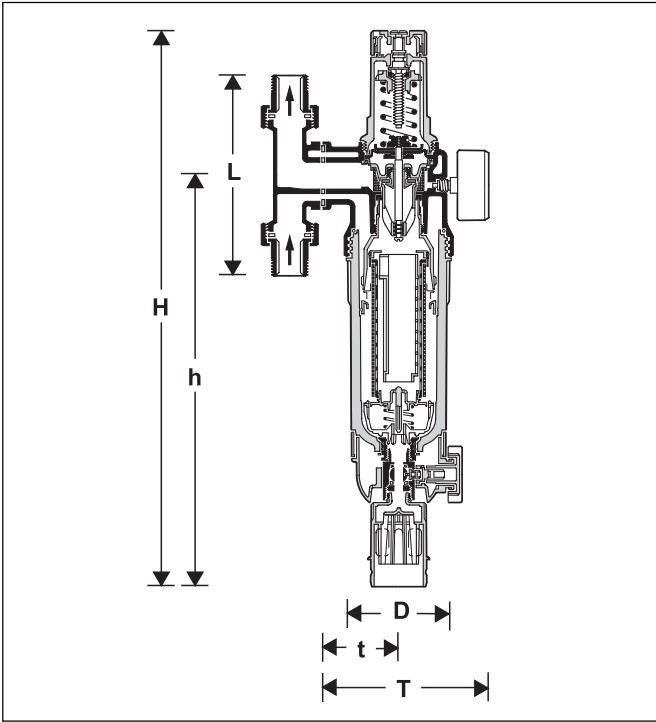
#### Technical Data

Installation position Vertical or horizontal, with filter bowl downwards

Operating temperature Maximum 40 °C with transparent filter bowl

Operating pressure Minimum 1.5 bar

Connection sizes  $\frac{3}{4}$ " - 1  $\frac{1}{4}$ "



**Method of Operation**

The filter combination includes reverse rinsing filter and pressure reducing valve in one appliance. The reverse rinsing fine filter holds back any dirt particles which may be in the flow medium. These dirt particles are then fully flushed out during reverse rinsing. The integral pressure reducing valve operates on a balanced force system. This means that the force exerted by a diaphragm operates against the force of an adjustment spring. The inlet pressure has no effect on opening or closing of the valve. Pressure fluctuations on the inlet therefore do not influence the outlet pressure.

**Options**

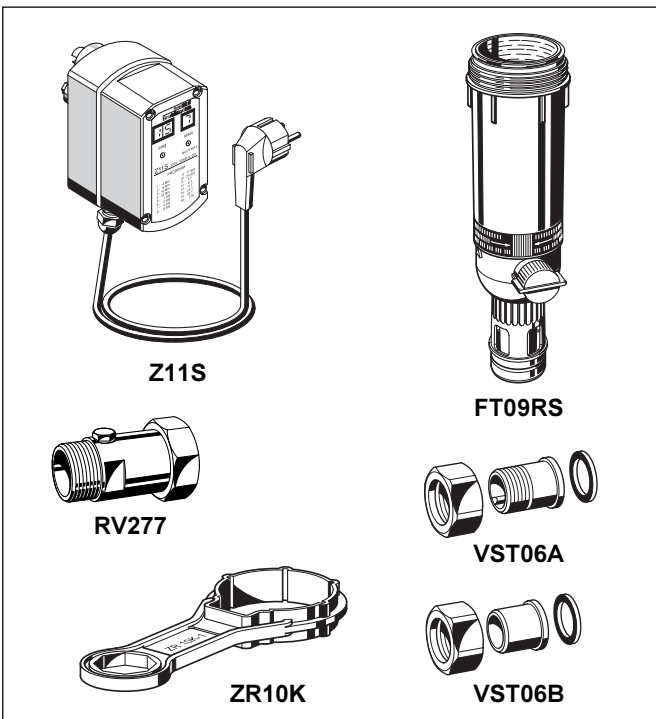
FK76CS- ... AA = Threaded male connections, filter mesh size 100 µm

Connection size

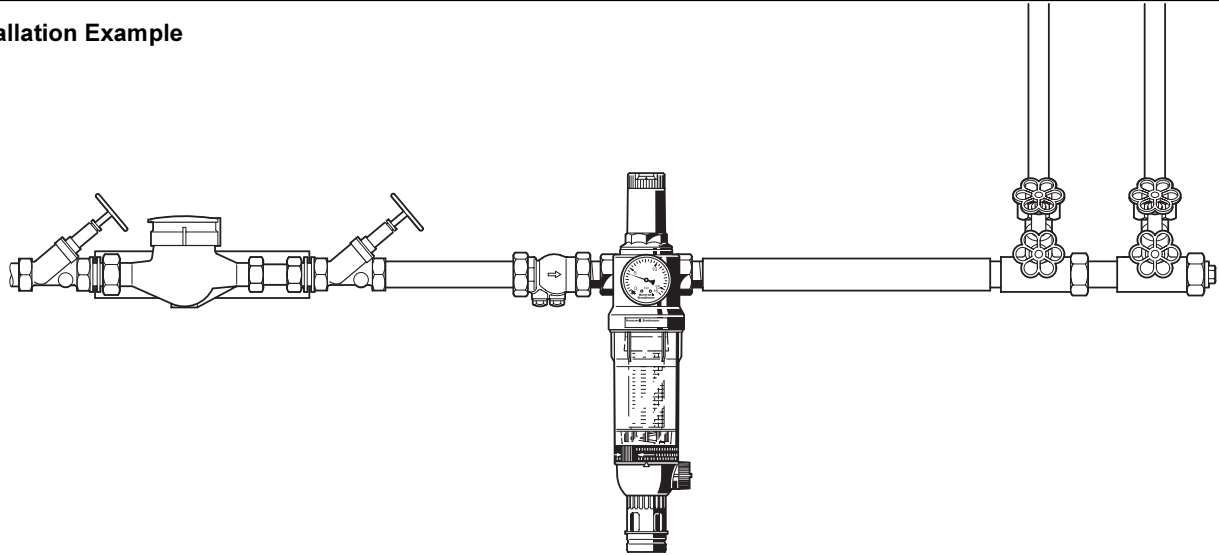
Connection size	R	3/4"	1"	1 1/4"
Nominal size	DN	20	25	32
Approximate weight	(kg)	3.9	4.0	4.1
Dimensions	(mm)			
	L	158	179	197
	T	95	95	99
	t	177	177	181
	H	493	493	493
	h	363	363	363
	D	97	97	97
kvs-value		7.3	7.6	8.0
DIN/DVGW-Approval No.		DW – 9311 AT 2317		

**Accessories**

- Z11S Automatic reverse rinsing actuator**  
For fully automatic filter cleaning at presettable intervals
- ZR10K Double ring wrench**  
For removing filter bowl and spring bonnet
- FT09RS Red-bronze filter bowl**  
For temperatures up to 70°C and operating pressures up to 25.0 bar
- RV277 Inlet check valve**  
Sizes R 3/4" - 1 1/4"
- VST06 Connection set**  
With threaded or solder union connectors  
A = Threaded male connections  
B = Solder connections



## Installation Example



## Installation Guidelines

- Install in horizontal or vertical pipework with filter bowl downwards
  - This position ensures optimum efficiency
- Fit shut off valves on both sides of the water meter
  - So that pressure gauge can be easily seen
  - Degree of contamination can be seen with clear filter bowl
  - Simplifies maintenance and inspection
- Fit immediately after water meter
  - Corresponds to DIN 1988, Part 2

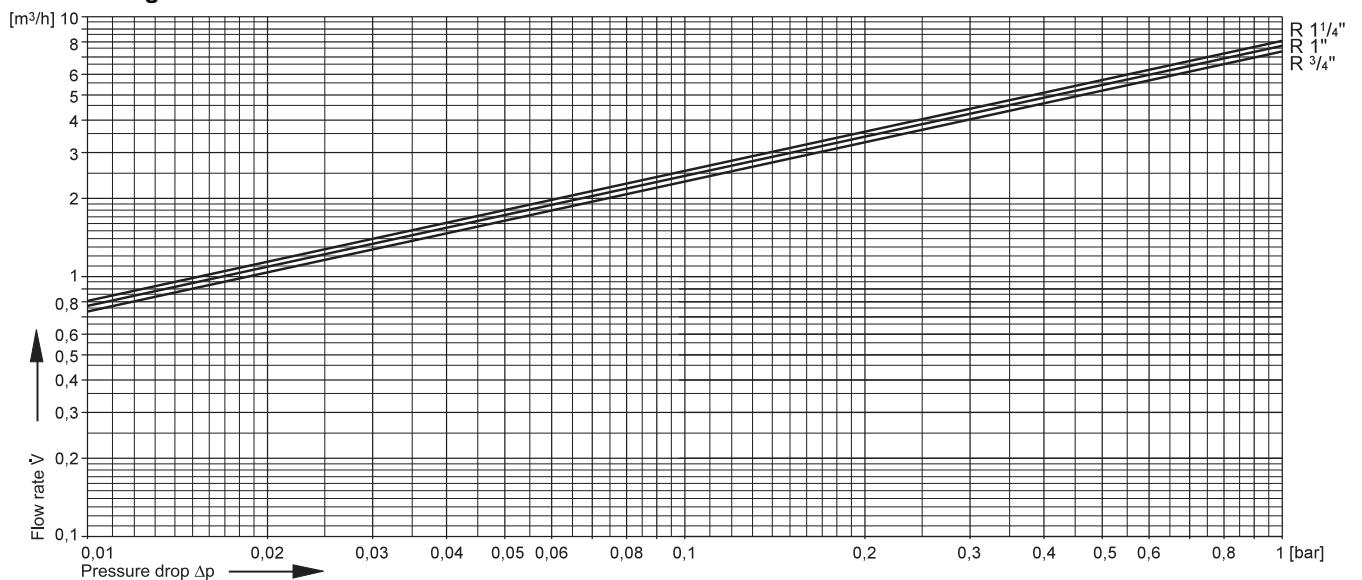
## Typical Applications

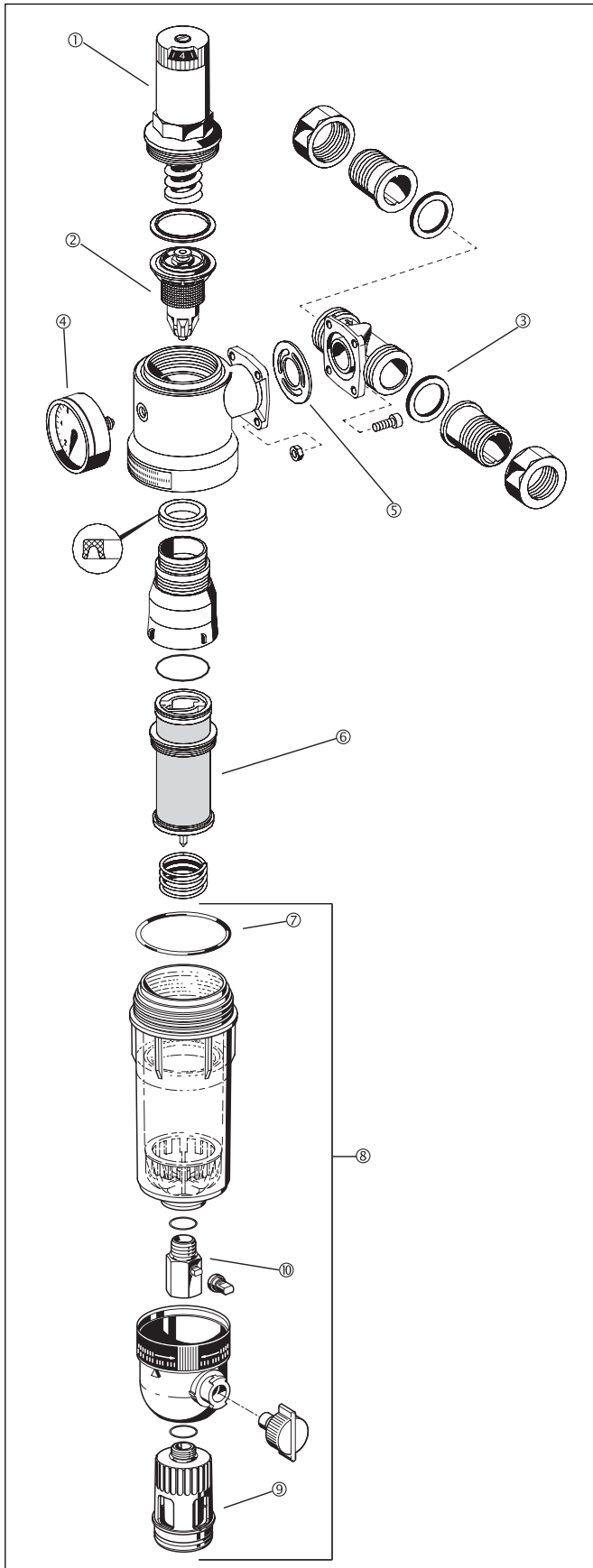
FK76CS filter combinations are suitable for all types of household installations. They can also be used for commercial and industrial applications within the limits of their specifications.

FK76CS filter combinations are installed:

- If there is existing metal or plastics pipework
- For installation in horizontal or vertical pipework
- As replacement for an existing filter (e.g. Cillit type 77)
- Where space is a problem, particularly where clearance from the wall is limited
- For protection against noise when the static pressure at take off points exceeds 5.0 bar (DIN 4109)
- If the static pressure exceeds the maximum permissible operating pressure of a system
- If pressure fluctuations in the downstream system must be avoided

## kvs-value Diagram





**Spare Parts for FK76CS Filter Combinations  
(From 1997 onwards)**

Description	Nominal size	Part number
① Spring bonnet complete (with setting scale)	3/4" + 1 1/4"	0901517
② Valve insert complete (without sieve)	3/4" - 1 1/4"	D06FA-1A
③ Seal ring set (Pack of 10)	3/4"	0901444
	1"	0901445
	1 1/4"	0901446
④ Pressure gauge	3/4" - 1 1/4"	M07M-A10
⑤ Flange seal	3/4" - 1 1/4"	5536400
⑥ Filter insert complete	Filter mesh 100 µm	3/4" - 1 1/4" AF11S-1A
	Filter mesh 20 µm	3/4" - 1 1/4" AF11S-1B
	Filter mesh 50 µm	3/4" - 1 1/4" AF11S-1C
	Filter mesh 200 µm	3/4" - 1 1/4" AF11S-1D
	Filter mesh 300 µm	3/4" - 1 1/4" AF11S-1E
	Filter mesh 500 µm	3/4" - 1 1/4" AF11S-1F
⑦ 'O' ring set (Pack of 10)	3/4" - 1 1/4"	0900747
⑧ Clear filter bowl	3/4" - 1 1/4"	KF11S-1A
⑨ Drain connection	3/4" - 1 1/4"	AA76-1/2A
⑩ Ball valve complete	3/4" - 1 1/4"	KH11S-1A

**Automation and Control Products**

Honeywell GmbH  
Hardhofweg  
D-74821 Mosbach

Phone: (49) 6261 810  
Fax: (49) 6261 81309  
braukmann@honeywell.com